



Access: pre-visit information

Visiting Geelong Gallery

Geelong Gallery

You can access Geelong Gallery via the main entrance, located at

55 Little Malop St
Geelong VIC 3220

Parking

Weekday metered parking and free 2-hour parking on weekends is located in Little Malop St, Atchison Pl, Fenwick St and Ryrie St. The civic car park located on Gheringhap St opposite the Town Hall offers parking Monday to Thursday from 7:30am to 6:00pm, Friday, Saturday and Sunday 7:30am to midnight (free parking after 6:00pm on Friday, all day Saturday and Sunday)

Accessible free and ticketed disabled parking is available on Little Malop Street.



Geelong Gallery acknowledges the Traditional Owners of the land on which it is sited, the Wadawurrung People of the Kulin Nation.

We pay our respects to their Elders, past, present and emerging.

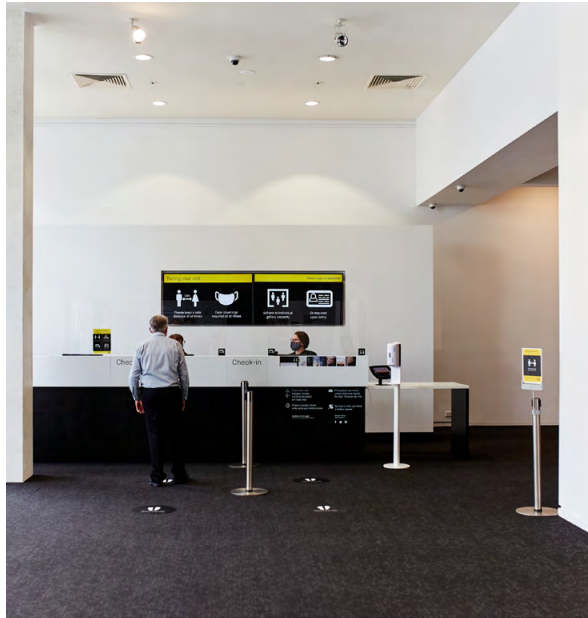
Cover image:
Stephen Bram—abstract painting,
installation view, Geelong Gallery
2019. Photographer: Moby Dick.

Above:
Geelong Gallery
Little Malop Street entrance
Photographer: Hails & Shine



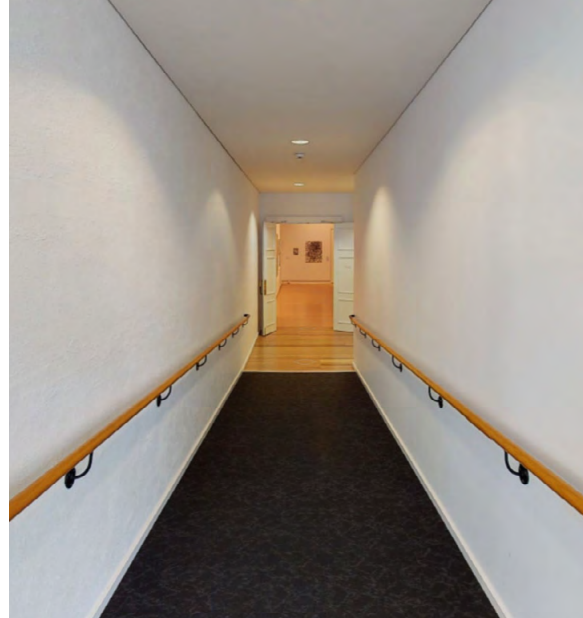
Facilities

Level access and way-finding



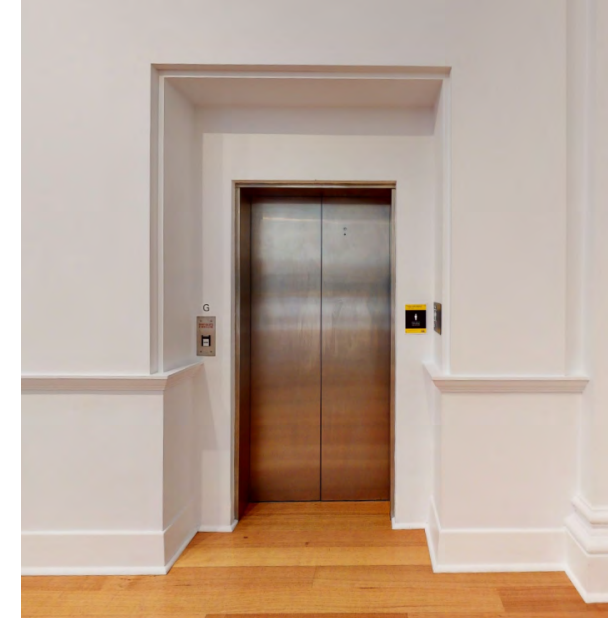
Geelong Gallery Foyer

Our Visitor Services team will welcome you in the Gallery Foyer. Access to our 'Temporary exhibition space' is level from the Gallery Foyer, to the right of the reception desk.



Ramp

Access to the main Galleries is via a ramp, located on the right side of the foyer, next to the Geelong Gallery Store.



Lift

Access to the Decorative arts gallery and bathrooms is via the lift, found in the Hitchcock Gallery, to the right of the staircase.



RONE in Geelong

COVID-19 Safety

All visitors to Geelong Gallery are required to check in, by registering your name and phone number.

Even if you have pre-purchased tickets, we ask you to register your details on the day using our QR code.

See our conditions of entry for up-to date information:
geelonggallery.org.au/covid-19

QR code check-in

Geelong Gallery is using the Victorian Government QR Code Service to record visitors for COVID-19 contact tracing purposes.

Whether you have pre-purchased a ticket or you are purchasing on arrival, please ensure you scan the QR code to check-in or see our Visitor Services staff if you do not have a QR scanning device.

Entry to RONE in Geelong

Exhibition entry to *RONE in Geelong* is via the Geelong Gallery Foyer. This entry does include some stairs.

For visitors requiring ramp access, we ask that you speak to one of our Visitor Services Officers or volunteers, either at reception or the exhibition entry. Team members can be identified by their *RONE in Geelong* lanyard. We are happy to check you in and direct you into the exhibition via the ramp.

Companion card

If you require support from a companion, and qualify for a Companion card, a companion is able to visit with you free of charge. The companion card must be presented upon entry. If you book a ticket over the phone, please let us know that you require a Companion ticket.



RONE in Geelong installation
(Geelong Gallery, 2021)
Photographer: Tony Mott
© Rone



RONE in Geelong

Large-print captions

Large print text booklets are available at the entry of the exhibition. Ask at the Exhibition entry or reception.

Additional artwork captions are accessible on your personal device using QR codes in the exhibition.

Sound element

The *RONE in Geelong* exhibition has components that include audio soundtracks. These audio components are located in the main Douglass Gallery. If you find the sound over-stimulating, you might wish to take a break in the Decorative Arts area on the basement level.

Early access

Access visits are available at all times during *RONE in Geelong* however for those seeking a quieter experience, booking times are from 9–10am Tuesdays and Thursdays. All bookings require 7 days advance notice: info@geelonggallery.org.au

Entry to Framing the Figure

Ramp access is available to the free exhibition, *Framing the figure*.

If you would like to visit *Framing the figure*, but do not have a ticket to *RONE in Geelong*, please ask our Visitor Services team at reception to escort you into the exhibition.

Contact us

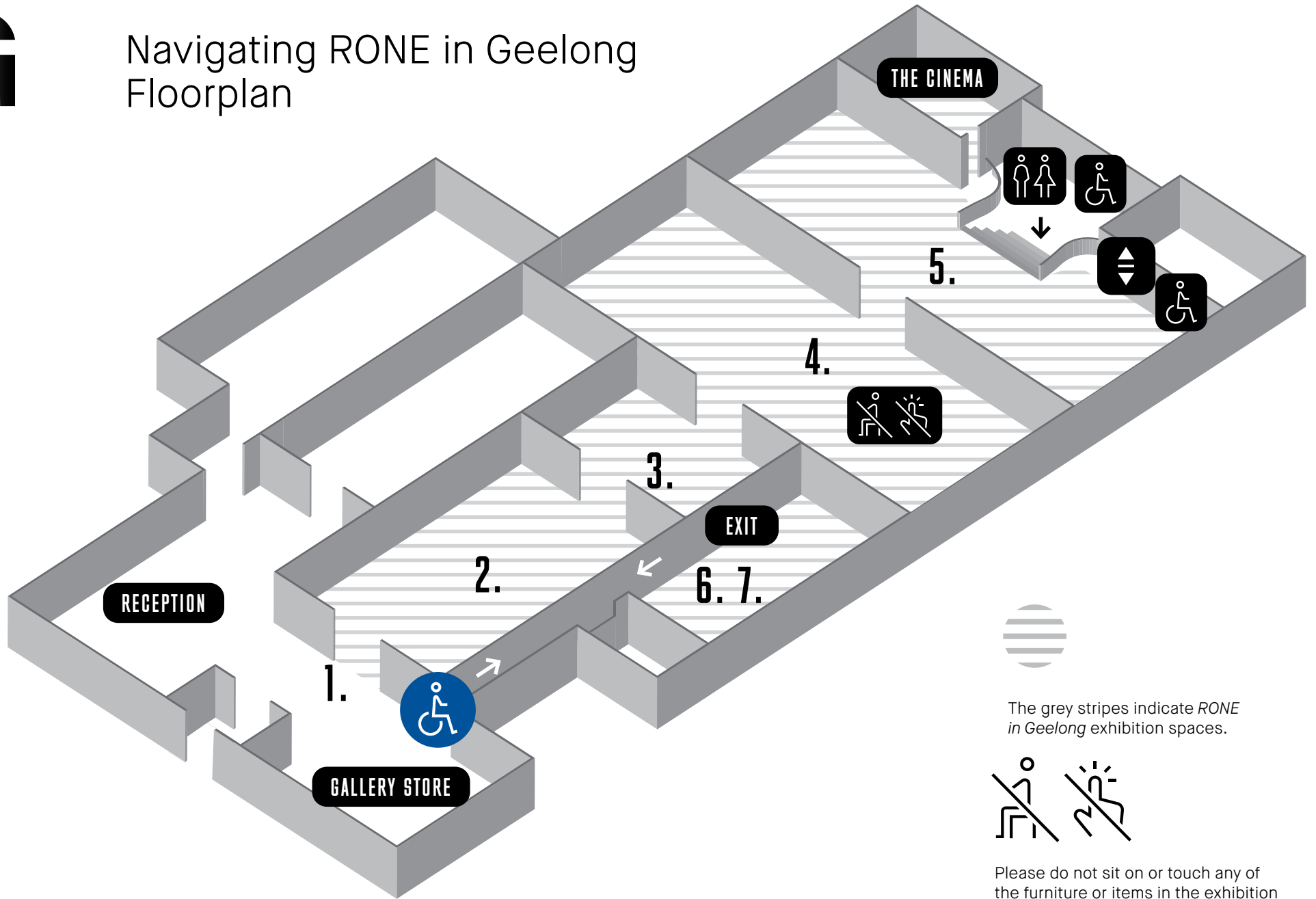
Gallery Geelong
55 Little Malop Street
Geelong VIC 3220 Australia
T 03 5229 3645
E info@geelonggallery.org.au



RONE in Geelong installation
(Geelong Gallery, 2021)
Photographer: Tony Mott
© Rone



Navigating RONE in Geelong Floorplan





Additional information

Wheelchairs

Wheelchairs are available at no charge from reception. To reserve a chair for your visit, please contact Visitor Services on 03 5229 3645

Toilets

All-Gender, wheelchair access, baby change, female and male toilets can be found on the lower level of Geelong Gallery, to the right of the staircases.

Wheelchair access is via the lift.

Guide Dogs

Guide Dogs and other registered assistance dogs are welcome in all spaces at Geelong Gallery.

Braille and raised letter signage

All facilities way-finding signage at Geelong Gallery include Braille and raised letters.

Customer Service

Our staff will accommodate all needs. Please ask and we will assist you.

Conditions of entry

Please refer to the Gallery website for up-to-date conditions of entry: geelonggallery.org.au/visit

Gallery Geelong

55 Little Malop Street
Geelong VIC 3220 Australia
T 03 5229 3645
E info@geelonggallery.org.au

Thank you

Thanks to Ainslee Hooper Consulting for supporting Geelong Gallery in the development of this Access information.



Geelong Gallery Store
Geelong Gallery, 2019
Photographer: Moby Dick