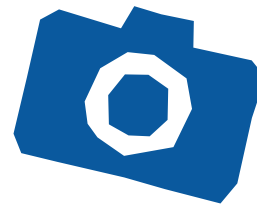


Activity Sheet

My Geelong – Photography challenge



Exploring photography

Look closely at Max Dupain's photograph, does the image remind you of somewhere you have been before?

Photographer, Max Dupain took this photo of *Eastern Beach, Geelong* in 1946. That's over 70 years ago!

If you have visited Eastern Beach before, what do you recognise and what is different about this location today?

Dupain has used symmetry in his photograph, meaning both sides of the photo look the same and are equally balanced.

Eastern Beach, Geelong 1946/1999 is a black and white photograph. Can you use your imagination to picture the colours of the water and trees?

Notice how still and calm the water is. What do you think the weather was like on the day Max Dupain took his photo?

Activity

What you'll need:

- Digital or Analogue Camera, Tablet or Camera phone
- A location in your local area

Inspired by Max Dupain's photograph we invite you to use a camera to take your own photo of your favourite location in your local area.

Maybe it's a place that lots of people visit or maybe it's a secret location that only you know about!

Use your camera to take photos of the things you like and find interest in your favourite location.



Experiment with depth and angles

Max Dupain took this photo from the top of the stairs, looking down at Eastern Beach.

Experiment with your camera by taking photos of your location while standing somewhere up high or far away. Next, try taking photos of the same location from down low or up close.

Notice how objects appear bigger and smaller depending on where you are standing when you take the photo.

If using a digital device experiment with filters, can you make your photograph black and white like Dupain's?

Your photos can be used to create a visual story of the adventure you had in your favourite location.

Perhaps you would like to recreate Dupain's photo by visiting Eastern Beach yourself. Stand where Dupain stood and see what he saw, through your own eyes and camera!



Share your work!

We invite you to share your creations with us online and on social media:

@GeelongGallery @Scribble.Studio
#GeelongGalleryKids #GalleryTots



Curriculum links

This activity aligns with the Early Years Learning Framework through:

- Learning Outcome 2: Children are connected with and contribute to their world.
- Learning Outcome 4: Children are confident and involved learners.
- Learning Outcome 5: Children are effective communicators.

Program Partner

Gwenneth Nancy Head Foundation

Max Dupain
Eastern Beach, Geelong 1946/1999
black and white photograph; edition 11/90
Geelong Gallery
Sybil Craig Bequest Fund, 1999
Photographer: George Stawicki

